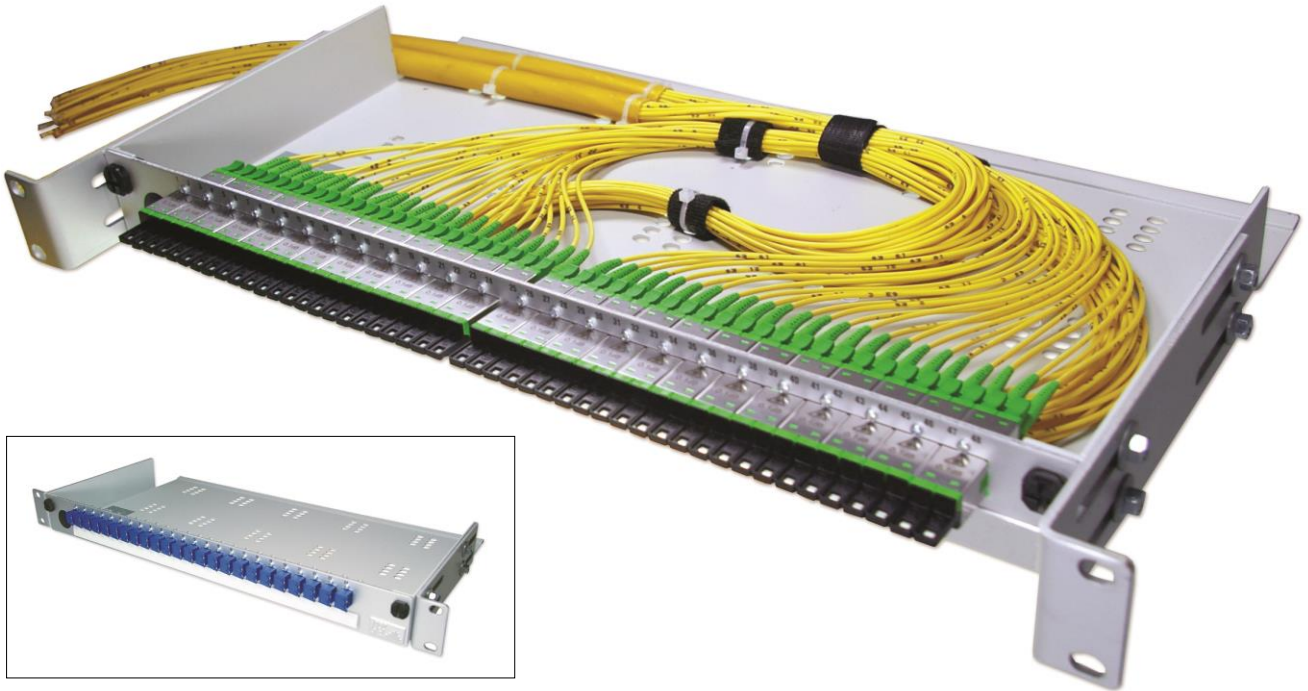


Network Systems ▶ Splice & Patch Modules ▶ Jumperbox 19"/ 1HU



General Information

The Jumperbox 19"/1HU is a patch box for holding up to 48 fibres. The incoming/outgoing jumper cables can be inserted variably from the left, the right and the rear, and be supported using cable clamps without any strain on the cables. The Jumperbox ensures a secure installation and provides an optimum access to the jumper cables for service purposes.

Features

- Universal jumper box for FOC® installation cables
- Same front panel design as Light-, Fiber- and Variobox
- Variable front panel insert
- Suitable for breakout cables, minibreakout cables, microbreakout cables and loose tube cables with distribution head

- Adjustable depth
- ETSI or 19" mounting
- Suitable for 300mm cabinet systems
- Variable cable entry from left, right or rear

Material

- Enclosure: Aluminium, powder-coated
- Side brackets: Aluminium anodized

Colour

- RAL 7035

Optional

- ETSI mounting brackets
- Patch cord tray

Dimensions

