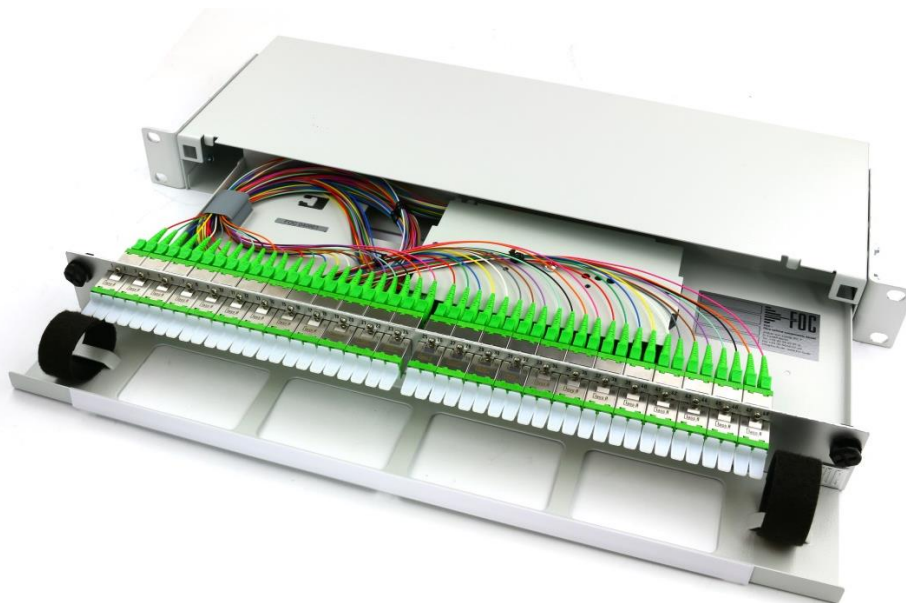
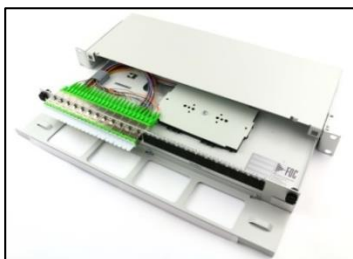
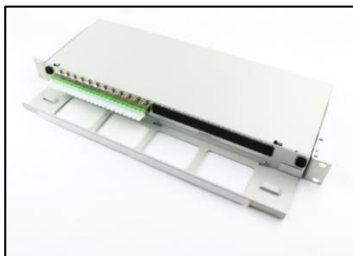


## Network Systems ▶ Splice & Patch Modules ▶ Variobox HD 19"/ 1HU



### General Information

The Variobox HD is a splice/patch box for connecting up to 48 optical fibres. The box was developed for use in dry rooms, preferably according to climate category C. It has been designed as an FO distribution box for 19" and ETSI housing systems. While the chassis will not be changed, the installation size is adapted by using appropriate mounting brackets. The Variobox HD is available with different front panel types. Different splice cassettes can be installed into the box. The cable entry is on the right at the rear or on the left at the rear. For an optimal cable routing without requiring additional height space a cable management tray in front of the box is available. Therefore a transverse connection panel above or below the box is not necessary.

### Features

- Slide-out splice drawer, 2-chamber system for separated accommodation of buffered tubes and pigtails
- 2 openings for buffered tubes or cable entry, large cable entry on the right at the rear or on the left at the rear, optional with cable fixing plate, small buffer tube entry on the right at the side or on the left at the side
- Easy depth adjustment of approx. 70 mm in 3 possible positions

- High variability in racks by alternative use of 19" or ETSI mounting brackets
- Ideal solution for WDM, CWDM or broadband cable splitter modules
- Suitable for racks with low mounting depth, e.g. 300 mm racks or outside plant enclosures

### Standard Versions

- 12 x LSH (Class A) compact (Dx) adapters and 24 x LSH (Class A) pigtails, cable entry on the left
- 24 x LSH (Class A) compact (Dx) adapters and 48 x LSH (Class A) pigtails, cable entry on the left
- 12 x LSH (Class A) compact (Dx) adapters and 24 x LSH (Class A) pigtails, cable entry on the right
- 24 x LSH (Class A) compact (Dx) adapters and 48 x LSH (Class A) pigtails, cable entry on the right

### Dimensions

- 19"/1HU or ETSI/2SU

### Colour

- RAL 7035

### Material

- Enclosure: steel and aluminium
- Body: steel, powder-coated
- Front and mounting brackets: aluminium anodized

**Optional**

- Cable management tray, depth 70 mm
- Extension set for an additional assembly of 24 ports
- Cable fixing plate e.g. for the lead-in of outdoor cables

**Delivery**

- Delivery complete with 1 or 2 splice cassette(s), including mounting hardware
- The Varioboxes HD are delivered ready for splicing (lead-in connectors installed, pigtails stripped, inserted, marked in telecom standard colours)

**Dimensions**

