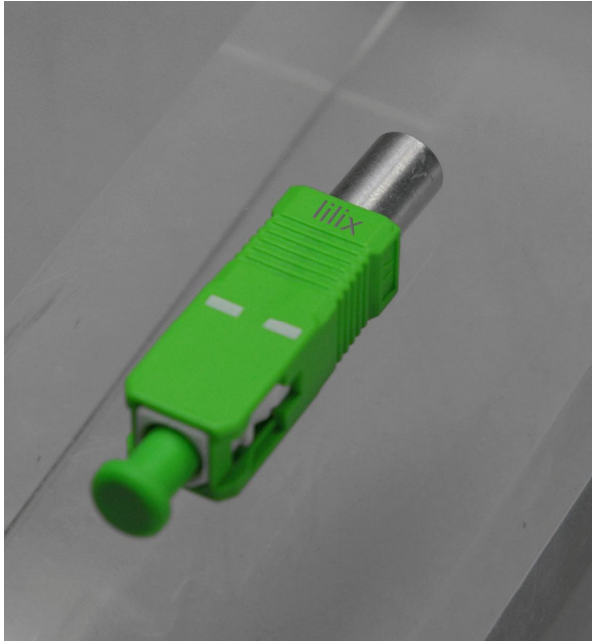


FOC Reflector Types

1. Terminating Connector Type



Application

- Commissioning tool
- Temporary installation

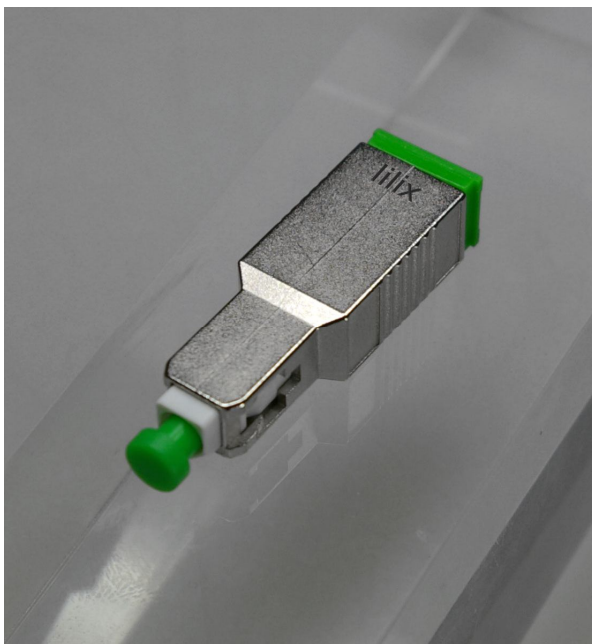
Benefits

- Most cost-efficient solution
- Available in all connector designs (for 1.25mm and 2.5mm ferrules)

Drawbacks

- Can be used only for dark fibers on reflector side; system signals are not passed through.
- Easily removable

2. Attenuator Type



Application

- Commissioning tool
- Temporary installation
- Permanent installation

Benefits

- Universal use
- Can be retrofitted

Drawbacks

- Most expensive type
- Available only for SC, LC and MU connectors
- Easily removable

3. Pigtail/Patch Cord Type



Application

- Patch cord: temporary installation
- Pigtail: permanent installation

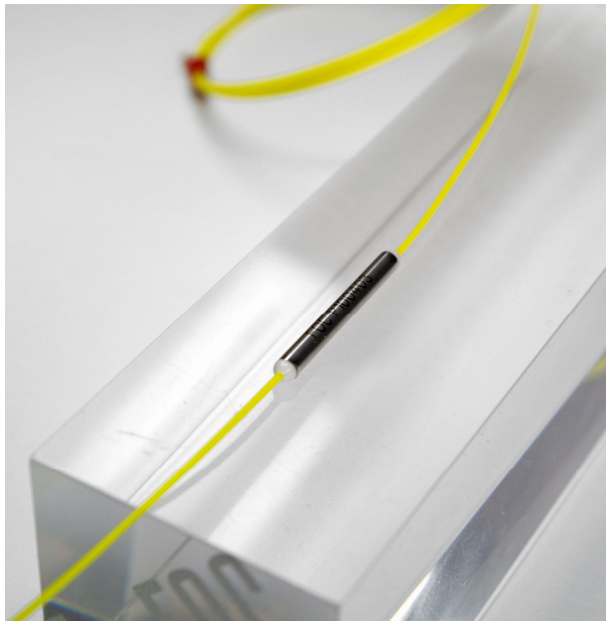
Benefits

- Pigtail: tamper-proof
- Patch cord: can be retrofitted
- Available in all connector designs (for 1.25mm and 2.5mm ferrules)

Drawbacks

- Patch cord is easily removable

4. Individual/Tube Type



Application

- Installation in devices
- Permanent installation

Benefits

- Tamper-proof
- Available with any connector design (with 1.25mm and 2.5mm ferrules)

Drawbacks

- Additional component